

Distribution blocks

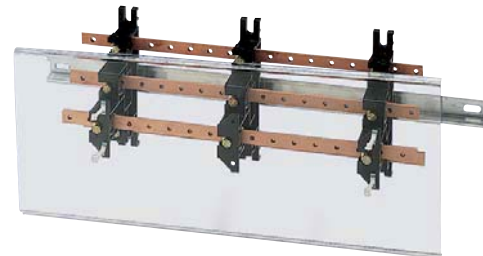
Distribution

Terminal connections (continued)

Stair type multipolar distribution blocks

References

Rating (A)	L (mm)	No. of poles	Icc (kA rms)	No. of supports	Distribution block	
					Reference	Protection cover
160	270	4 P	25	2	5028 0421	5028 0411
160	420	4 P	17	2	5028 0451	5028 0412
160	620	4 P	20	3	5028 0471	5028 0413
250	270	4 P	30	2	5028 0423	5028 0411
250	420	4 P	22	2	5028 0453	5028 0412
250	620	4 P	18	3	5028 0473	5028 0413
400	270	4 P	24	2	5028 0425	5028 0411
400	420	4 P	21	2	5028 0455	5028 0412
400	620	4 P	13	3	5028 0475	5028 0413

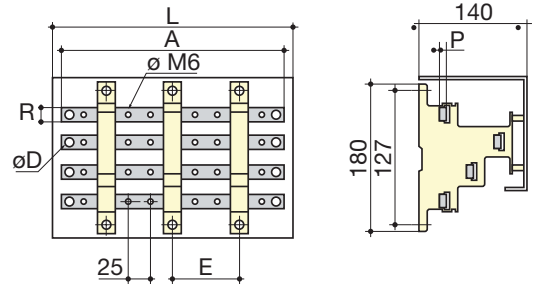


repair_012_b_1_cat

Dimensions

Type	Pack qty	Reference
Spacer for protection cover	1	5028 0415

Rating (A)	Nb of terminations	A	ØD	E	L	P	R
160	9	250	8	150	270	5	15
160	15	400	8	300	420	5	15
160	21	600	8	250	620	5	15
250	9	250	10	150	270	5	20
250	15	400	10	300	420	5	20
250	21	600	10	250	620	5	20
400	8	225	12	150	270	5	32
400	14	375	12	300	420	5	32
400	20	620	12	250	620	5	32



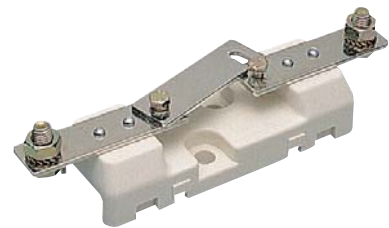
repair_040_a_1_x_cat

Stair type distribution blocks with threaded holes. Can be clipped onto a symmetric DIN rail.
Factory assembled and supplied without protection cover

Disconnectable solid neutral links

References

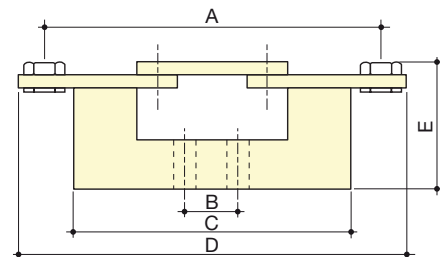
Rating (A)	Connection type	Reference
160	Terminal connections	NB16 0000
250	Terminal connections	NB16 0000
400	Terminal connections	NB40 0000
630	Terminal connections	NB63 0000



repair_060_a_2_cat

Dimensions

Rating (A)	A	B	C	D	E	Width max. (mm)
160	100	25	85	117	45	32
250	150	25	120	173	45	32
400	176	25	150	200	65	55
630	210	25	160	240	65	75



shunt_012_a_1_x_cat